



GOSDEN HOUSE SCHOOL

GOSDEN NEWS

20th September 2024

The grounds at Gosden are extensive and we are lucky to have a fabulous Site Team who work tirelessly to keep improving our environment.

Towards the end of last term the new goat barn and surrounding area was completed and at the end of the summer holidays we welcomed two new animals to our community – pygmy goats – names to be decided (see below for photo). There has been great excitement from the children who have all had the opportunity to visit them.

Further improvements on site have been the installation of 3 phase power outside to support the new stage area and outdoor classroom, a new roof to the Bothy, courtesy of the Rotary Club and new carpets in some of the classrooms.

As I am sure you can all appreciate our 40 acre site requires almost constant attention and Adam and his team have done an extensive amount of brush clearing and planting of bulbs and perennials for next year. We just hope that we can stop the rabbits and squirrels from eating them all!



DATES FOR THE DIARY

w/c 23rd September – donations for Harvest welcome

23rd September – PTA clothes donations – *please send in with transport*

Thursday 3rd October – Gosden Links Coffee Morning (*see invite on next page*)

Thursday 10th October – Hello Yellow Day

Monday 14th October – PTA Coffee Morning in the Hall

Tuesday 15th October – Secret Garden Theatre

w/c 21st October – Maths Focus Week

w/c 11th November – Anti-Bullying Week

Tuesday 12th November – Odd Sock Day

Wednesday 13th November – Parents Evening & Careers Evening

Tuesday 19th November – PTA Coffee Morning in the Hall

Thursday 21st November – First Aid Day

1st December – Gosden Christmas Craft Fair

RECENT PARENTMAILS

Evisense

Weald & Downland Museum Payment

Swimming

Family Photos Request – Robins and Owls

Ordering of School Lunches

Return of Data Collection, Medication and Special Dietary Forms

PTA Nearly New Clothing Donations, Coffee Mornings and Christmas Fair

Flu Vaccination Consent

KEY STAGE TRANSFER INFORMATION FOR PARENTS AND CARERS OF CURRENT YEAR 2, YEAR 6 AND YEAR 11 STUDENTS:

Surrey County Council SEND admissions department, manage the Key Stage Transfer of all students with EHCPs, moving from Infants to Juniors, Primary to Secondary and from Secondary to Post 16 options in September 2025. This is the link to the key timescales and deadlines. [Admissions guidance for children with an Education, Health and Care Plan \(EHCP\) - Surrey County Council \(surreycc.gov.uk\)](https://www.surreycc.gov.uk/education/ehcp)

The key dates to note are:

15th February 2025: Surrey SEND have to issue all Year 2 and Year 6 EHCPs naming confirmed placement for September 2025.

31st March 2025: Surrey SEND have to issue all Year 11 EHCPs naming confirmed placement for September 2025

Once placements have been named then families can apply for travel assistance.

If you have any queries about the process please do contact me at school on 01483 892008 or by email lellis@gosden-house.surrey.sch.uk Lucy Ellis EHCP Coordinator

Harvest Celebration - Monday 7th October

We are very excited to announce our Harvest Celebration.

We would be very grateful if you could spare any food and essential items and send them in with your child to add to our harvest collection. Non-perishable items such as tinned food and packets are ideal. **Donations are welcome from Monday 23rd September onwards.**

We will be donating the food to those in need, liaising with the North Guildford Food Bank.

Many thanks in advance for your generosity.

The School Council

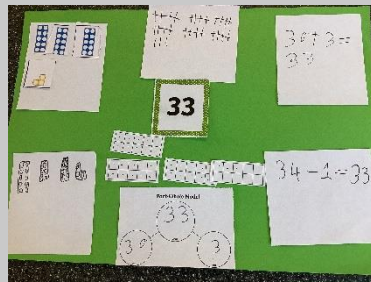
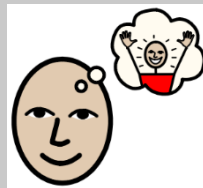


Beth, our Child & Family Support worker, tied her laces and ran a half marathon, smashing her PB and raising a MASSIVE £495 for Gosden Children First! Well done, Beth!



KESTRELS

What a fantastic start we have had in Kestrel class! In Literacy, we have been busy storytelling. We went on a journey around the school listening to our favourite books. We then used our 'Creative' Learning Habit to make up our own stories using different props. We had lots of fun sharing these with our friends during a story telling session in the sunshine.



In Math's, we have been practising our counting skills and investigating how the same number can be represented in different ways. We have enjoyed taking our learning outside and using these Math's skills in the forest and playground.

Our Science topic this half term is forces. We used our 'Exploring' Learning Habit when we investigated the forces 'push' and 'pull'. We experimented with toys and equipment and made a tally chart to record if they could be pushed, pulled or both. We then went into the classroom and made models using playdough. As we created our characters, we talked about whether we were pushing or pulling the playdough to make different shapes.





We have been extremely busy in Year 7 exploring our school with our new friends and having lots of fun along the way.

In all of our lessons we have discovered how brilliant learning at Gosden is!

We have been collecting lots of Life Tools for our Toolkits which has made all of our adults incredibly proud! We are so excited to discover what the rest of Year 7 has in store.



It has been a great start to the year for the new Year 10s, who have managed the transition to Key Stage 4 really well! We started off the term by selecting our new class jobs which include receptionist, class PA, recycling manager and daybook manager.

Everyone has really been enjoying their vocational options, those in Animal Care and Plant Care have been managing the changeable weather and thinking carefully about appropriate clothing and footwear. There has been some great work as well in DT, Catering, Performing Arts and Digital Skills.



The Exploring the Community group have already been out on a visit to Wisley, where they had a brilliant day exploring using the map and had a visit to the café to work on their communication and money handling skills.



In PSHE we have been working on life skills, learning how to safely carry out skills needed for adulthood such as ironing and cooking.

Welcome Back



I hope you all had a lovely break and are ready for a new and exciting school year.

Since I last updated the Aspirations Blog, I have completed a Level 6 Careers Lead course and I am raring to go! I have spent some time talking to Year 11 during their Careers lesson about their possibilities for the future.

Every year we have new challenges as some of our young people want more complex work experiences and this year is no exception. Work experience runs for two weeks from Monday 3rd February 2025.

Throughout the year I network within the community to find new, supportive employers to support our young people. If any parents have any ideas of possible placements/employers that I could contact please do let me know, stidbury@gosden-house.surrey.sch.uk. Also, if any parents would be willing to chat to our students about their own jobs and careers that would also be very much be welcomed.

Important Date

Transition Evening:

Wednesday 13 November This is a great opportunity to talk to Lucy, our EHCP Co-ordinator, and myself together with the support of HALOW, Future Choices, County Care, Carwarden House, Philip Southcote and hopefully more. The focus will be around transition and next steps in Preparation for Adulthood.

Upcoming Open Events



Brooklands Technical College

Tuesday 5th November 10.30-12.30

SEND and Transition tours.

These will be held regularly on a Tuesday morning and more dates will follow.

[Brooklands Technical College - Vocational training in further and Higher Education](#)

Nescot (North East Surrey College of Technology)

Saturday 12th October

Wednesday 20th November

Tuesday 4th March

Thursday 15th May

You need to register online for these dates.

[Nescot Open Events | Nescot](#)

Farnborough College of Technology

Tuesday 15th October

Wednesday 16th October

Wednesday 20th November

Wednesday 5th February

All the Open Days for Farnborough are 4pm – 7.30pm

[Events from 15 October – 18th June 2025 – Farnborough College of Technology \(farn-ct.ac.uk\)](#)

Guildford College

Wednesday 16th October 4.30pm - 7pm

Saturday 9th November 9.30am - 12.00

Wednesday 5th February 4.30pm – 7pm

Wednesday 23rd April 4.30pm – 7pm

[Guildford College \(activatelearning.ac.uk\)](#)

Merrist Wood College

Wednesday 9th October 4.30pm -7pm

Saturday 16th November 9.30am -12.00

Wednesday 26th February 4.30pm – 7pm

Wednesday 7th May 4.30pm – 7pm

[Merrist Wood College \(activatelearning.ac.uk\)](#)

If you have any questions or worries please don't hesitate to contact me via email on: s.tidbury@gosden-house.surrey.sch.uk or on the school number 01483 892008.

WELL DONE!

Congratulations to the following students for completing their 'Gosden Toolbox' and successfully collecting 10 'Life Tools'.

Developing these 'Life Tools' will help them now and also prepare them for their exciting future pathways.

Year 7
James R

Year 8A
Finley C
Kai A
Donna S

Year 8S
Phoenix T
Kelsie C
Jessica R
Ryan M
Safa A
Bethan A

Year 9
Madiha T
Casper H
Melissa E
Joshua A



EVENTS

Gosden Links Coffee Morning

Thursday 3 October
9am to Noon
Rigton Cottage,
Links Road,
Bramley – look out for the balloons!

**Join us for coffee and cake
and help us send Gosden
House School to the
pantomime this Christmas!**



We're very grateful to Leanne, Jo and Louise, and all members of the PTA, who are planning to join us at this Coffee Morning. They are great ambassadors for Gosden House.



YOUR OLD CLOTHES CAN CREATE NEW MEMORIES FOR SOMEONE ELSE & HELP OUR SCHOOL!

The PTA are collecting clothes, bags and shoes to set up a nearly new 'pop up' stall at our school events.

All proceeds go to our young peoples classes to be spent on things they need.

You can drop donations at school or send in donations on the school bus, collection date:

Monday the 23rd of September



Mens, ladies & childrens clothes, shoes and bags needed! Please only donate what you would give to a friend 😊

Email PTAgosden@hotmail.com for more information

We are fortunate at our school to have a PTA which is joined with a fantastic charity called "Gosden Children First", an integral part of the school community.

All parents, carers and members of the school community automatically become members of our community and the PTA, when your child joins our school. The majority of students will be using school transport which can both reduce contact with the school and leave us feeling isolated. We have coffee mornings that allow us to meet each other, share information and feel supported. These take place during the day at school. It is a great opportunity to come in and soak up the fabulous atmosphere of the school and feel part of your young person's journey and make friends.

[Email: PTA@gosden@hotmail.com](mailto:PTA@gosden@hotmail.com)

PTA Volunteers

We welcome help from parents, teachers and friends. We are actively looking to build a list of volunteers who can commit some of their time to helping. Every little helps, so just one hour of assisting at an event, wrapping lucky dip prizes or folding raffle tickets (just a few examples) would be invaluable.

If you would like to join us, please speak to a committee member, come along to our next meeting (date to follow) or email us at PTA@gosden@hotmail.com.

Our PTA is about much more than simply fundraising. We exist to provide closer links between home and school and build a much needed community.

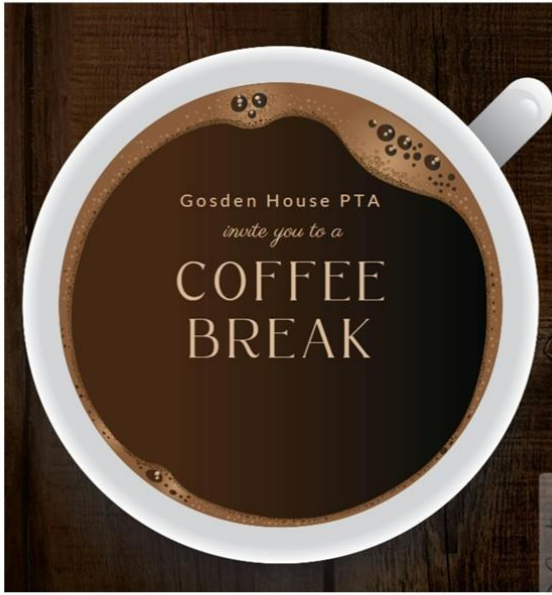
Class Reps

Class Reps play a very important role, providing a link between individual classes and parents, and the PTA committee. We are actively looking for new Class reps. and would love to have a chat with you about the possibility of joining in. Email us!

PTA Committee

Chairperson – Leanne Rowan
Treasurer – Dannielle McInerney-Jlassia
Secretary – Carole Traynor/Nina Williams

The Committee hold open PTA meetings, any member can come along, find out what the association are planning, share ideas and get involved. If you would like information or have any questions, please **contact Leanne on PTA@gosden@hotmail.com**



Come and unwind with a coffee!

Monday the 14th October, 10am – 11:30am

In the school hall

FUTURE coffee morning DATES for your diary:

➤ Tuesday the 19th of November 10am – 11:30am

Nearly new clothing and accessories available to browse and buy! All proceeds to our school so grab yourself a bargain ☺

All welcome, lets build our school community and sneak in a couple of calories too!

Save the date!!!!!!

SUNDAY THE
1ST OF
DECEMBER @
SCHOOL, 2-4:30

More details
to follow!



P
T
A

D
A
T
E
S

&

N
E
W
S

For any concerns or support, please do contact Beth Sutton, Child and Family Support Worker (Mon-Fri) or Jane Cowles, Pastoral Assistant (Mon-Weds) at

bsutton@gosden-house.surrey.sch.uk

jcowles@gosden-house.surrey.sch.uk

pastoral@gosden-house.surrey.sch.uk

You can reach us at 07864 721931 or by phoning the school on 01483 892008.

<https://www.gosden-house.surrey.sch.uk/our-pastoral-support/>



FAMILY LEARNING



Family Learning Courses and Workshop for Parents/Carers Autumn 25

Learn about children and teenager's development and strategies to support positive behaviour

For course or workshops dates, more information and to book your place please click on links or scan the QR code below

Behaviour Strategies



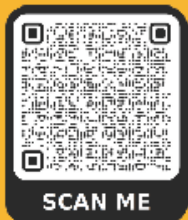
Develop Positive Bedtimes Routines



Building Your Child Concentration



Who's In Charge



Emotionally Based School Non-Attendance



Helping your Child to Develop Positive Friendships



Web : www.surreycc.gov.uk/familylearning

Email : family.learning@surreycc.gov.uk

Tel : 0300 200 1044



FACE-2-FACE

Parent Befriending Service



Face2Face offers a free and confidential 1:1 befriending service for parents of children with a disability.

Have you recently learnt that your child has a disability? Perhaps the news came as a complete shock to you? Maybe you have known about your child's disability for a while but are finding things difficult at the moment?

If you are the parent/carer of a disabled child, we can help.

All our befrienders are parents who have been trained to give the best possible support to others. They provide 1:1 support in your own home, by video call or on the phone, and most importantly it's provided without judgement or agenda. As the befrienders are parents themselves, they can remember how they wanted to talk to someone who understood what they were feeling at the time. Many people find it invaluable to have another parent who can simply listen and understand.

"It was very good to speak to another parent who really understands. There are some things which are very difficult and that you don't want to discuss with professionals. Having a parent to talk to helped me realise that these things/feelings are normal. Thank you, it has been good to know you and use the service."

whitelodgecentre.co.uk

enabling ability



Dads-2-Dads

Befriending Group for Dads



White Lodge's Face2Face service offers a free befriending service for parents of children with a disability and we have established a new group just for Dads who are looking for support.

Have you recently learnt that your child has a disability? Perhaps the news came as a complete shock to you? Maybe you have known about your child's disability for a while but are finding things difficult at the moment?

If you are the Dad/male carer of a disabled child and are struggling to cope, we can help.

Supported by the Face to Face service at White Lodge the Dads2Dads group is a new monthly drop-in for fathers and male carers of children with additional needs. The group will be a great way to meet others, develop friendships, socialise and gain emotional and moral support. The group will be facilitated by two trained male befrienders from the Face2Face befriending service.

The group meet once a month on a Wednesday evening. Scan the QR code for for information

Please contact the Face2Face Co-ordinator before attending for the first time. E: face2face@whitelodgecentre.co.uk | T: 01932 567131



whitelodgecentre.co.uk

White Lodge | Holloway Hill, Chertsey, Surrey | KT16 0FA



SCAN ME

Mums-2-Mums

Befriending Group for Mums



White Lodge's Face2Face service offers a free befriending service for parents of children with a disability and we have established a new group just for Mums who are looking for support.

Have you recently learnt that your child has a disability? Perhaps the news came as a complete shock to you? Maybe you have known about your child's disability for a while but are finding things difficult at the moment?

If you are the Mum/female carer of a disabled child and are struggling to cope, we can help.

Supported by the Face to Face service at White Lodge the Mums2Mums group is a new monthly drop-in for mothers and female carers of children with additional needs. The group will be a great way to meet others, develop friendships, socialise and gain emotional and moral support. The group will be facilitated by two trained female befrienders from the Face2Face befriending service.

The group meet once a month on a Wednesday evening. Scan the QR code for for information

Please contact the Face2Face Co-ordinator before attending for the first time. E: face2face@whitelodgecentre.co.uk | T: 01932 567131



whitelodgecentre.co.uk

White Lodge | Holloway Hill, Chertsey, Surrey | KT16 0FA



SCAN ME

FREE PARENTING COURSES

Speech & Language Therapy
Team

★ Makaton Champions ★



Signs of the week w/c 16th September 2024
(Theme: school)

This week's champions are:

★ Aicha, Joey & Lexie – Year 11 ★



Speech & Language Therapy
Team

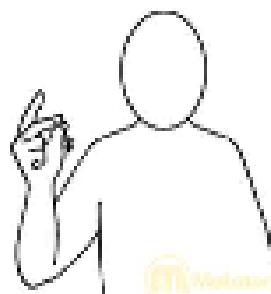
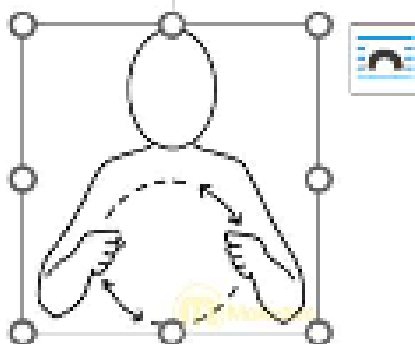
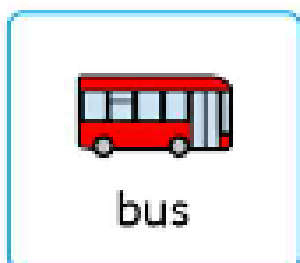
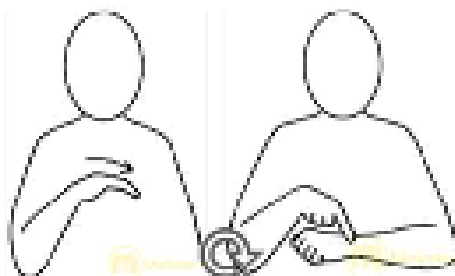
★ Makaton Champions ★

Signs of the week w/c 23rd September 2024
(Theme: school)



This week's champions are:

★ Tia and William – Year 10 ★



If you would like to make a donation to the school you can do so via the Gosden Children First charity page by clicking on this link <https://wonderful.org/charities/1049925>

You are able to donate directly or to a particular fundraising page that you would like to support.

